



Serving companies, retailers, & individuals.



Cabinetry

605 N. Parkway Wayland, IA. 52654 (319) 256-9663

www.waglerwood.com

Quality Components

Kiln Dried Woods

We use only properly dried woods of 7% & less moisture content! This is an important factor that many people are unaware. If the wood is not dried to 7% or under you actually have a low quality product. The reason for this is that wood shrinks when it dries. Imagine if you build something with wet wood, and it dries over time in your home environment. This is how splits, cracks, & warps happen. I'm sure you can see why it would be a low quality product!

This is why all of Our wood is dried to 7% or less because this is the point of moisture your home environment will maintain in woods!

The splitting, cracking, & warping is done before we build. The bad is cut out, and you are left with a premier quality product you will be proud to resale or put into your lifestyle.



Premier Finish

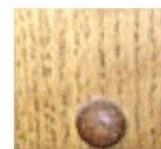
This is the closest resemblance we can give as to the quality of the finish on our premier products!

The grain of the wood is the only difference between your catalog paper and our finish! Some woods naturally have less of a grain feel than others. Below is a listing of woods that you can feel the most grain & the least. Some of the woods with the most grain feeling are species of Oak, Ash, & Elm --- This is due to the open nature of the grain. Some of the woods with the least grain feeling are species of Alder, Walnut, Cherry, & Maple ---- This is due to the tighter nature of the grain.

We apply our finish with the finest finishing materials & spray equipment in the industry! Our finish is a close guarded secret of 2 generations of experience in fine woodworking!

IT HAS BEEN TRIED AND TESTED. IT'S PREMIER.

Our finish is free from dust, dirt, & foreign contaminants, & our wood is sanded to the right level to insure a premier finish! This applies to all of our products except any economy products!!!!



Hanging Methods

The first, the best, & the only in the Industry! We engineered & built the machine that completes this process. This design completely hugs the wall. Keyholes are normally just a slot that is next to impossible to make tight. We have created a tapered process that is far ahead of our competitors!

These slots are found on all of the plaques & wall hangings we sell, except for the shelving that require drilled holes. All shelving is equipped with hanging holes that are 16" on center to catch the studs in most homes. The hanging holes come with caps to cover the screw heads.

WAGLER

WOODCRAFTS

MANUFACTURING

--- Premier Hardwoods Supplier ---



605 N. Parkway
Wayland, IA 52654
(319)256-WOOD (9663)
FAX 1-270-747-1798



Your source for quality wood, plastic, & metal products!

NOW OFFERING

CNC Routing

Laser Engraving

Sawing & Planing

Hunting Calls

Vacuum Forming

Lathe Turning

Home Interior Furnishings

Plaques (Award, Trophy, & Taxidermy)

*Crown Molding, Baseboard, Door Casing, Trimwork,
Chair Rail, Bannister Rail, Hardwood Flooring & more...*

Amish Furniture

Millwork

Signs, Banners, & More

Picture Frames

Metal Display Racks

Cabinetry

Wedding Glasses & Bottles



www.waglermfg.com

Please visit our showroom to unite our tradition of quality into your lifestyle or business today!

Wagler Woodcrafts, Manufacturing

605 N. Parkway

Wayland, IA 52654

(319)256-9663

Owner: Curt Wagler

This business is a trade that has been passed down generation to generation. Curt's grandfather started woodworking as a hobby, his dad, Delmer expanded on that by building home interior items for retail. Curt then expanded the business into manufacturing as well as retail. We now offer premiere quality wood, plastic, & metal products.

The business started out in a small shop behind Curt's father, Delmer's house & last July was the Grand Opening for Curt's new building in the Wayland Industrial Park.

In the last year since opening the new facility Curt has met the challenges of a growing business with:

- Bigger machinery to produce a higher volume of parts & products
- Added more room in the facility for a large computer itemized packing room
- Added more room in the facility for a top of the line custom assembly room
- Added a new design your own kitchen cabinet center with a one of a kind hands on build your own cabinet door for the convenience of our customers
- More clientele from not only individuals but from factories & big businesses as well
- An increase in wholesale sales in the U.S. & overseas. The increase is largely due to local factories & retailers learning about our competitive rates, diverse offerings, & small & large quantities.
- Due to our in house website, web sales are on the rise daily
- One of Curt's biggest challenges is building a lot of his own specialized automated & conventional types of machinery to keep the facility running efficiently for a business that continues to grow on a daily basis

Custom Cabinetry

FINE LASTING CABINETRY



Quality Components & Features Built Into Every Piece Of Wagler Cabinetry

Construction Materials
See for yourself Ours are 3/4" thick panels.
All of our competitors are 3/8" thick!
So is there really a competition?



OURS



THE OTHER GUYS

Only the best hardware!
Fully concealed hinges & full
extension drawer tracks rated to 100#,
so you can see clear in the back of the
drawer & pack a heavy load!



Dovetailed drawers!
Need we say more, find
that in cabinet drawers
this day & age!



Drawer bottoms are
inserted in dato's, not
stapled in from the bottom!

**Our cabinets have many quality
features demanded by today's
demanding home builders!**

Take a look!

Strong Corner Gussets

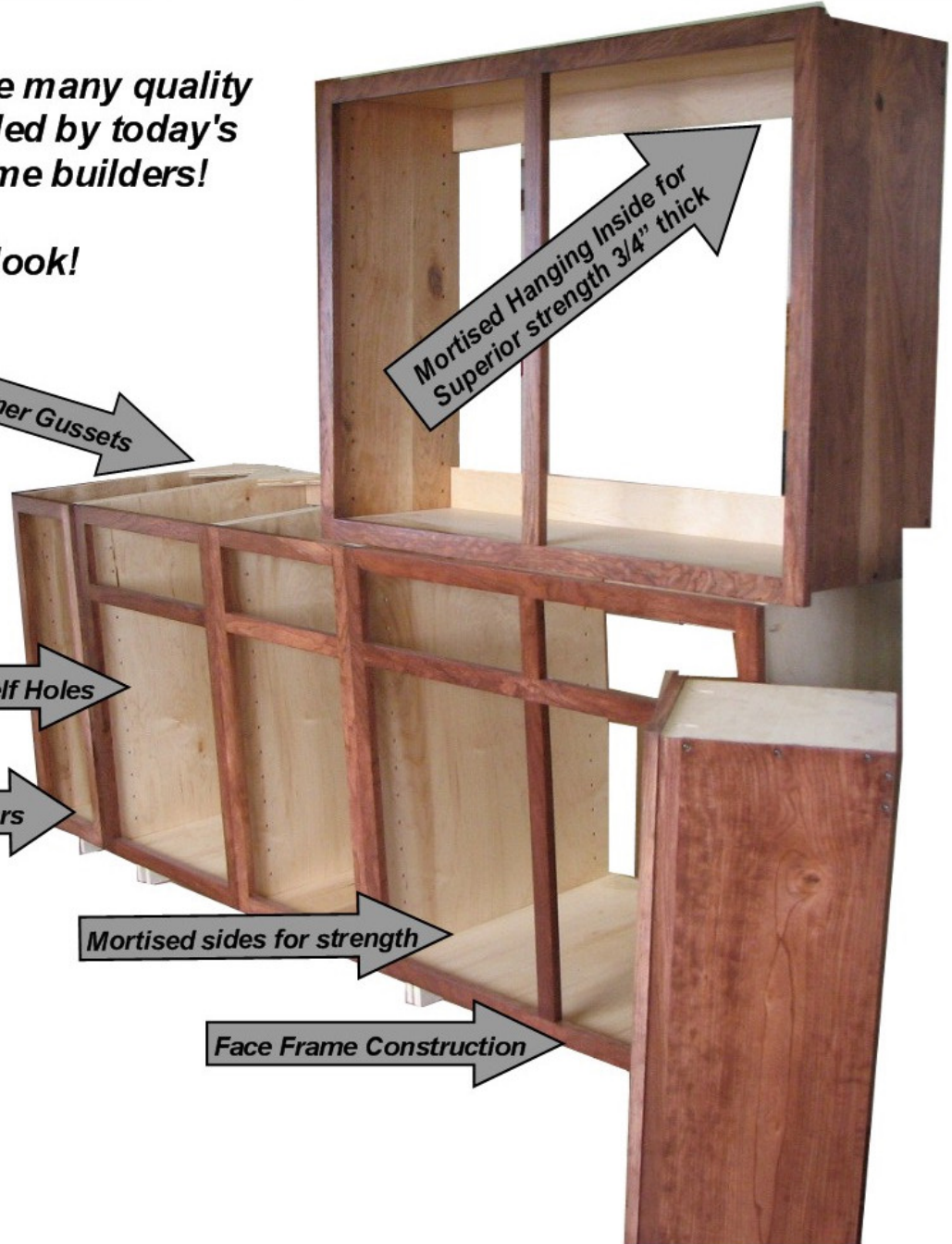
Mortised Hanging Inside for
Superior strength 3/4" thick

CNC. Cut Adj. Shelf Holes

Bright Interiors

Mortised sides for strength

Face Frame Construction



Custom Cabinetry

FINE LASTING CABINETRY



You have the idea in your head, let us help make it a reality



**Make your idea a slam!
With our no slam soft door closers!
Standard equipment on our cabinetry!**



**How about this Adjustable Shelves that Slide Out!
Standard equipment on our cabinetry! when slide outs are ordered**



**No plastic drawer
mounts here**

Adj. Slide Carrier Clears the Face Frame for un obstructed clearance

Custom Cabinetry

FINE LASTING CABINETRY



www.waglerwood.com

Selecting doors is a 4 step process, this will help you sort through the endless door configurations possible!

Please View Our Online Door Videos That Show All Of The Door Configurations At www.waglerwood.com Listed Under Cabinetry

Step 1 Select Frame



Round Frame



Ogee Frame



Straight Frame

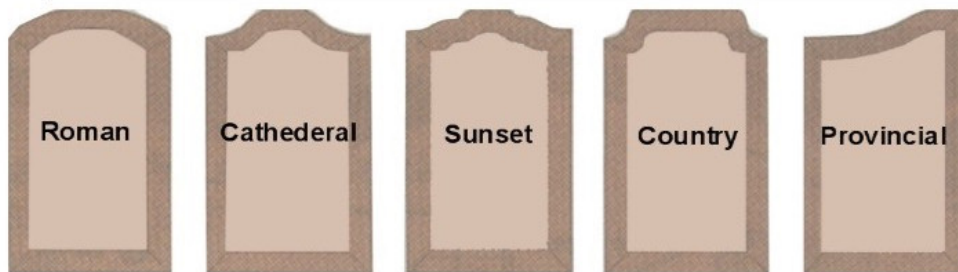


Shaker Frame

Step 2 Select Panel

Over 144 door options to view online

Please note these are our standard door configurations. If there is a style such as mitered, flat, solid, or southwestern please ask for pricing! They are optional



Do you want cathedral doors? Top outside edges are flat not curved for illustration only

Step 3 Select Outside Router Edge

Please note that the router edge you choose will be the same on the drawer fronts!



These samples reflect the profile shapes available. Profile shapes and depths may not be exact due to finish sanding!

Step 4 Select Face & Interior Color

Row 1 Hickory
 Left to Right
 Unfinished, Natural,
 Dark, Mocha,
 Fruitwood, Red



Row 2 Cherry
 Left to Right
 Unfinished, Natural,
 Dark, Mocha,
 Cabernet, Paprika



Row 3 Maple
 Left to Right
 Unfinished, Natural,
 Dark, Mocha,
 Fruitwood, Paprika



Row 4 Alder
 Left to Right
 Unfinished, Natural,
 Dark, Mocha,
 Fruitwood, Red



Row 5 Oak
 Left to Right
 Unfinished, Natural,
 Dark, Mocha,
 Fruitwood, Red



Row 6 Qtr. sawn Oak
 Left to Right
 Unfinished, Natural,
 Dark, Mocha,
 Fruitwood, Red



Row 7 Walnut
 Left to Right
 Unfinished,
 Natural, Dark,
 Black, Special, Red



Row 8 Ash
 Left to Right
 Unfinished, Natural,
 Dark, Mocha,
 Fruitwood, Red



"Legendary Wagler"
 Colors That Will Never Go Out of Style!

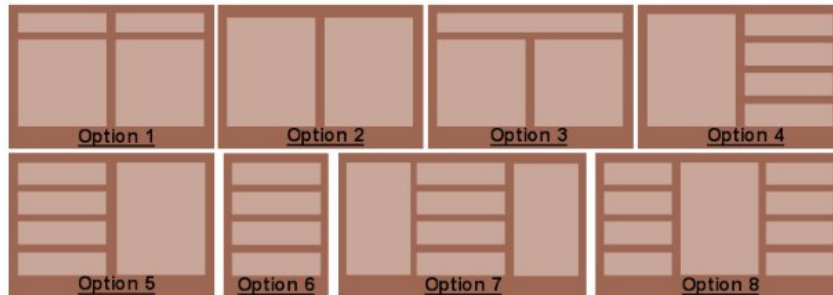
Custom Cabinetry

FINE LASTING CABINETRY



**After you have selected your doors & frames choose a box design!
Kitchens Please Submit a Set of Architect Drawings!**

Fax to 1-270-747-1798



Pull out cutting board \$128.00
Drawers are 4" deep unless other specifications made!
Drawers & Doors are spaced according to cabinet length!

No Counter Tops Included!

Wagler Permanent Cabinet Pricing

Base Cabinet Pricing

2 Adjustable Shelves Standard

Standard Vanity 18" D x 30 1/2" T Cabinet Pricing \$16.50 Per Running In.

Standard Kitchen & Dental 24" D x 34 1/2" T Cabinet Pricing \$18.00 Per Running In.

Top Cabinet Pricing

12" Deep Cabinet Pricing

2 Adjustable Shelves Standard

30" Tall Cabinet Pricing \$15.00 Per Running In.

36" Tall Cabinet Pricing \$16.00 Per Running In.

42" Tall Cabinet Pricing \$17.50 Per Running In.

18" Tall Cabinet Pricing \$10.25 Per Running In.

15" Tall Cabinet Pricing \$9.20 Per Running In.

"Dovetailed Drawers" 1 free per 18" of Base Cabinet Purchased

Price Per Extra Drawers

12"W x 22"L x 4"D \$30.00 Each

14"W x 22"L x 4"D \$32.00 Each

16"W x 22"L x 4"D \$34.00 Each

18"W x 22"L x 4"D \$38.00 Each

20"W x 22"L x 4"D \$40.00 Each

22"W x 22"L x 4"D \$44.00 Each

24"W x 22"L x 4"D \$48.00 Each

Price to Upgrade Adjustable Shelves Into Slide Outs On Tracks \$22.00 Each For the Ball Bearing Tracks

Prices Above For Oak, Maple, Birch! For Walnut, Ash or Cherry Add 10% For Hickory Or Alder Add 7%

Cathedral Doors Add 10%

Professional Installation & Delivery 20% Of Total Cabinet Cost!

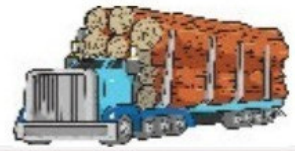
Trash Bin Pullouts on Ball Bearing Slides \$168.00 Hold 3 Containers

Lazy Susans For Corner Sections 3 Trays \$248.00

Heavy Duty Appliance Lifts \$225.00

Custom Cabinetry

FINE LASTING CABINETRY



After you have selected your doors & frames choose a box design!



**Gun Cabinet 12 Guns / Coat Closet /
Locking Ammo Box & 3 Locking Drawers
Size 40" L x 80" T x 16" D
Pick Up Price \$978.00**

TV Stand with 6 Adjustable Shelves
Size 48" L x 40" T x 18" D
Pick Up Price \$628.00



Custom Cabinet Pricing is Easy!

First Select the Height & Depth

Second Multiply length of cabinet desired by amount shown!

Submit your cabinet design layout!

24" Tall Cabinet Pricing

14" Deep Cabinet Pricing	\$10.02 Per Running In.
16" Deep Cabinet Pricing	\$10.39 Per Running In.
18" Deep Cabinet Pricing	\$10.68 Per Running In.
20" Deep Cabinet Pricing	\$12.38 Per Running In.

30" Tall Cabinet Pricing

14" Deep Cabinet Pricing	\$10.41 Per Running In.
16" Deep Cabinet Pricing	\$10.78 Per Running In.
18" Deep Cabinet Pricing	\$11.02 Per Running In.
20" Deep Cabinet Pricing	\$12.62 Per Running In.

36" Tall Cabinet Pricing

14" Deep Cabinet Pricing	\$10.68 Per Running In.
16" Deep Cabinet Pricing	\$11.10 Per Running In.
18" Deep Cabinet Pricing	\$11.62 Per Running In.
20" Deep Cabinet Pricing	\$13.58 Per Running In.

40" Tall Cabinet Pricing

14" Deep Cabinet Pricing	\$11.54 Per Running In.
16" Deep Cabinet Pricing	\$12.01 Per Running In.
18" Deep Cabinet Pricing	\$12.92 Per Running In.
20" Deep Cabinet Pricing	\$14.46 Per Running In.

48" Tall Cabinet Pricing

14" Deep Cabinet Pricing	\$12.68 Per Running In.
16" Deep Cabinet Pricing	\$13.72 Per Running In.
18" Deep Cabinet Pricing	\$14.62 Per Running In.
20" Deep Cabinet Pricing	\$16.58 Per Running In.

50" Tall Cabinet Pricing

14" Deep Cabinet Pricing	\$13.29 Per Running In.
16" Deep Cabinet Pricing	\$14.18 Per Running In.
18" Deep Cabinet Pricing	\$15.20 Per Running In.
20" Deep Cabinet Pricing	\$17.32 Per Running In.

72" Tall Cabinet Pricing

14" Deep Cabinet Pricing	\$21.30 Per Running In.
16" Deep Cabinet Pricing	\$22.45 Per Running In.
18" Deep Cabinet Pricing	\$23.60 Per Running In.
20" Deep Cabinet Pricing	\$25.68 Per Running In.

80" Tall Cabinet Pricing

14" Deep Cabinet Pricing	\$23.30 Per Running In.
16" Deep Cabinet Pricing	\$24.45 Per Running In.
18" Deep Cabinet Pricing	\$25.60 Per Running In.
20" Deep Cabinet Pricing	\$28.92 Per Running In.

Shipping and Delivery Terms

All items are priced FOB Factory.
Shipping and/or delivery are charged per individual order.

If the item is small enough to ship UPS, Fed Ex, or USPS, the shipment charges are by amount of sale for up to 5 item purchases.

These prices are not eligible on items totaling over 50 pounds!

We ship by UPS, FED EX, or USPS for small shipments, at our disgression. We also, will charge recievers account if requested (which eliminates shipping charges from us on invoices). You would pay the carrier directly. If this is your preference, please put your shipper # in the shipping price box & mention the carrier.

Sorry, No COD's.

<i>Purchase Price</i>	<i>Shipping Charge For Shipments in the US only</i>
\$0.01 - \$9.99	\$5.00
\$10.00 - \$49.99	\$9.00
\$50.00 - \$99.99	\$15.00
\$100.00 - \$199.99	\$20.00
\$200.00 and over	\$25.00

For large shipments, we use insured freight haulers. Most shipments go by PANAMA TRANSFER. We get great rates on large shipments out of our dock but we can't guarantee rates on large shipments as they are dependant on weight. The charges are added to the invoice or charged COD. Your choice!

If you request a quote for your production needs, we can possibly set a solid freight rate for your company's products!

Delivery

There is \$48 minimum fee for delivery or \$1.10 per mile.

We will deliver or ship by large truck, whichever is more economical for the customer.

To keep our shipping and delivery costs down, some minor assembly may be required on bulky items, such as tables.

WAGLER WOODCRAFTS MANUFACTURING

PURCHASE ORDER FORM

1. SOLD TO:		2. SHIP TO: (If different from "Sold To")	
P. O. Number:	Date:	Company Name:	
Company Name:		Contact/Title:	
Buyer's Name/Title		Street Address:	
Street Address		City/State/Zip:	
City/State/Zip		Phone: 1-319-256-WOOD (9663) OR 1-319-850-0545	
Phone:	Fax:	Fax: 1-270-747-1798	
Email:		Address: 605 N. Parkway St., PO Box 251, Wayland, IA 52654	

3. ORDER INFORMATION:

Qty	Size or Model #	Product Description (Specify Base or Plaque, Mount, Call, Etc) (Include Wood and Thickness for Base/Plaques)	Special Notes (If plaque/base, specify inlay pocket, shape, and router if different from standard.)*	Price Each	Total
			Subtotal	\$	
		If NO tax, exempt #: _____	← Tax	\$	
		Refer to back of booklet for shipping	← Shipping	\$	

*If router is unspecified for plaques/bases, then round over router will be used.

TERMS & CONDITIONS

● **TERMS**

A company check, money order, or Credit Card Information should be sent with order. Unless an open account is established with N/30 terms. If no account is established, Please allow 10 days for check to clear bank. If you wish to apply for N/30 Terms a Credit Application will be Faxed to you.

● **SPECIAL ORDERS**

Special orders require advanced payment in the full amount!

● **SCHEDULED ORDERS**

Scheduled orders may not be cancelled once Purchase Order has been started, although minimal adjustments are allowed.

● **EXCHANGE POLICY**

No refunds. We exchange, repair or replace at our discretion. For exchanges on non defective items, there is a 15% restocking fee. Any defective item must be accompanied with original sales receipt.

● **CARTONS**

Colors and styles can be mixed in cartons, except on package offers. Photographic and typographical errors are subject to correction.

THESE TERMS, CONDITIONS, AND PRICES ARE NON NEGOTIABLE!!

Credit Card Information : Payment by Master Card or Visa Accepted!
Requires a 2.4% Handling Fee.

Card # _____ - _____ - _____ - _____ Expires ____/____/____

Cardholders Name _____

Signature _____

WE RESERVE THE RIGHT TO DISCONTINUE PROMOTIONAL ITEMS AT ANY TIME!

**Prices and specifications subject to change without notice.
We appreciate your business!**

COPY FOR FUTURE USE.

Please continue to visit our dealers for your product needs, their shelves are full of quality products!

Dealer Info.

*Visit www.waglerwood.com for any product questions!
We are continually striving to engineer the products you deserve that last a lifetime, with a retail dealer network that is accommodating to your needs & desires!*

*Buy it the Wagler way, Solid.
So you don't have to upgrade in the future!
Phone 1 (319) 256-9663 (wood)*

605 N. Parkway St. Wayland, IA. 52654

WAGLER MFG.
WOODCRAFTS



Unite our tradition of quality into your lifestyle or business today!